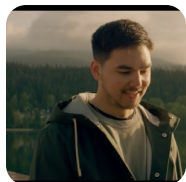


Love you still (abcdefghi) – Tyler Shaw

I love you still
And you know I always will
'Til the end of time
I won't change my mind
I swear I'll always give my best,
No pretending
Give you breakfast in bed every morning
There ain't no answer to
This complex question
I just keep falling for you every day
Won't ever take up too much time or attention
Take a second just to make our connection
I would do anything for your affection
Kinda fun tryna go
About it all the wrong ways
I'm just so into you,
I wanna let it all out
You're so perfectly fine
I could talk all day but let me spell it out
A-B-C-D-E-F-G-H
I love you still
And you know I always will
'Til the end of time
I won't change my mind
Love you, I'll be here
I will never disappear
Said forever, I swear
So I will be there
You said you didn't wanna
Be like everybody else
Wanted something only you and
I can have ourselves
Picture perfect isn't
Something that I've ever felt
Love when you smile right in front of me
I'm just so into you,

I wanna let it all out
You're so perfectly fine
I could talk all day but let me spell it out
A-B-C-D-E-F-G-H
I love you still
And you know I always will
'Til the end of time
I won't change my mind
Love you, I'll be here
I will never disappear
Said forever, I swear
So I will be there
I love you still
And you know I always will
'Til the end of time
I won't change my mind
Love you, I'll be here
I will never disappear
Said forever, I swear
So I will be there



Słowa: brak danych
Muzyka: brak danych