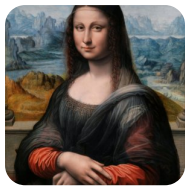


# Mona Lisa – Nat King Cole

Mona Lisa, Mona Lisa, men have named you  
You're so like the lady with the mystic smile  
Is it only 'cause you're lonely  
They have blamed you?  
For that Mona Lisa strangeness in your smile?  
Do you smile to tempt a lover, Mona Lisa?  
Or is this your way to hide a broken heart?  
Many dreams have been brought to your doorstep  
They just lie there and they die there  
Are you warm, are you real, Mona Lisa?  
Or just a cold and lonely lovely work of art?  
Do you smile to tempt a lover, Mona Lisa?  
Or is this your way to hide a broken heart?  
Many dreams have been brought to your doorstep  
They just lie there and they die there  
Are you warm, are you real, Mona Lisa?  
Or just a cold and lonely lovely work of art?  
Mona Lisa, Mona Lisa



Słowa: brak danych  
Muzyka: brak danych