

# Lonely – K.P.T

KPT

I have to be a Lonely, something I don't know

Because i dressed king song

I'm already f\*\*king Miami

What king of work?

What's this people, what's kind amplation

What it is I'm Kamil not

Singing pleasure with the I'm dremt some slang

Ej!

Acha!

I'm Kamil

To be alone, to to to, to be Lonely

To be alone, to to to, to be Lonely

To be alone, to to to, to be Lonely

To be alone, to to to, to be Lonely

From Polish to Miami

From Chicago to America

From Europe to United States

Start in the work

He's Lonely

There is no I don't know how often

But is but a KPT so Lonely

KPT so Lonely

To be alone, to to be a Lonely

To be alone, to to be a Lonely

To be alone, to to be a Lonely

To be alone, to to be a Lonely

I was you

I was you

To be alone,to to to to be a Lonely

To be alone,to to to to be a Lonely

I was you

To be a a a a a a Lonely, Lonely

Acha!

To be alone, to to be a Lonely

To to to to to to to to to to be - I was you

Acha!

I was you, you you you

To be alone, To to be a Lonely

Lonely

Lonely

Lonely

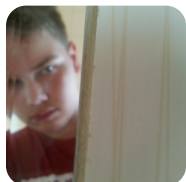
Lonely

Lonely

To be alone, to to to be a lonely

Lonely, Lonely, Lonely, a a Lonely

Lonely, to be alone, to to be a Lonely



Słowa: brak danych

Muzyka: brak danych