

When I'm Gone – Katy Perry

[Chorus]

When I'm gone, I'm never really gone
You think you're moving on
But it won't be for long, you'll see
When I'm gone, I'm never really gone
You think you're moving on
But no one's gonna feel like, feel like
Thought it would be easy, easy to forget me
Let go of the memories (ah, ah, ah, ah)
Now your bed is empty
And you're waking up, sweating
I'm still in your wild dreams
Late nights, calling me, calling me
Do anything to keep me close
Well, you should know it's gonna be, gonna be
So hard for you to let me go
When I'm gone, I'm never really gone
You think you're moving on
But it won't be for long, you'll see
When I'm gone, I'm never really gone
You think you're moving on
But no one's gonna feel like, feel like

[Post-Chorus]

Me on top of you
Touch you like I do
No, you'll never forget
When I'm gone, I'm never really gone
You think you're moving on
But no one's gonna feel like, feel like

[Verse]

You're chasin' the danger
It's just in your nature
Look for me in strangers (Ah-ah-ah-ah)
All these pretty faces
No one can replace it
I'm always your favorite

[Pre-Chorus]

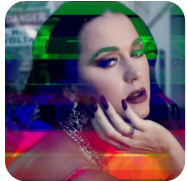
Late nights, calling me, calling me
You do anything to keep me close
Well, you should know it's gonna be, gonna be
So hard for you to let me go

[Chorus]

When I'm gone, I'm never really gone
You think you're moving on
But it won't be for long, you'll see
When I'm gone, I'm never really gone
You think you're moving on
But no one's gonna feel like, feel like

[Post-Chorus]

Me on top of you
Touch you like I do
No, you'll never forget
When I'm gone, I'm never really gone
You think you're moving on
But no one's gonna feel like, feel like



Słowa: brak danych
Muzyka: brak danych