

Creep – Karen Souza

When you were here before,
Couldn't look you in the eye
You're just like an angel,
Your skin makes me cry

You float like a feather
In a beautiful world
I wish I was special
You're so very special

But I'm a creep,
I'm a weirdo
What the hell am I doin' here?
I don't belong here

I don't care if it hurts,
I wanna have control
I want a perfect body
I want a perfect soul

I want you to notice
When I'm not around
You're so very special
I wish I was special

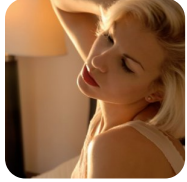
But I'm a creep
I'm a weirdo
What the hell am I doin' here?
I don't belong here, ohhhh, ohhhh

Whatever makes you happy
Whatever you want
You're so very special
I wish I was special

But I'm a creep,

I'm a weirdo
What the hell am I doin' here?
I don't belong here

I don't belong here



Słowa: brak danych
Muzyka: brak danych