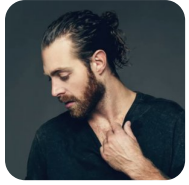


Cold – Jonathan Roy (Chris Stapleton cover)

Girl, the way you broke my heart
It shattered like a rock through a window
I thought we had it so good
Never really saw this comin'
Oh, why you got to be so cold?
Why you got to go and cut me like a knife
And put our love on ice?
Oh, girl, you know you left this hole
Right here in the middle of my soul
Oh, why you got to be so cold?
What am I supposed to say
If anybody asks me about you?
I guess I'll tell 'em I'm without you
How am I supposed to live
When I built my life around you?
Try to put yourself in my shoes
Oh, why you got to be so cold?
Why you got to go and cut me like a knife
And put our love on ice?
Oh, girl, you know you left this hole
Right here in the middle of my soul
Oh, why you got to be so cold?
I can only feel my love hangin' on
I don't feel like it's over
I'm still on fire
Why you gotta be so?
Oh, why you got to be so cold?
Why you got to go and cut me like a knife
And put our love on ice?
Oh, girl, you know you left this hole
Right here in the middle of my soul
Oh, why you got to be so cold?
Why you got to be so cold?
Why you got to be so cold?
Got to be so cold



Słowa: brak danych
Muzyka: brak danych