

My Heart Is Broken – Evanescence

I will wander 'til the end of time, torn away from you

I pulled away to face the pain
I close my eyes and drift away
Over the fear that I will never find
A way to heal my soul
And I will wander 'til the end of time
Torn away from you

My heart is broken
Sweet sleep, my dark angel
Deliver us from sorrow's hold
(Over my heart)

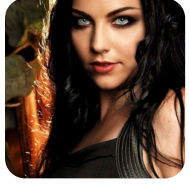
I can't go on living this way
But I can't go back the way I came
Chained to this fear that I will never find
A way to heal my soul
And I will wander 'til the end of time
Half alive without you

My heart is broken
Sweet sleep, my dark angel
Deliver us

Change – open your eyes to the light
I denied it all so long, oh so long
Say goodbye, goodbye

My heart is broken
Release me, I can't hold on
Deliver us
My heart is broken
Sweet sleep, my dark angel
Deliver us
My heart is broken

Sweet sleep, my dark angel
Deliver us from sorrow's hold



Słowa: brak danych
Muzyka: brak danych