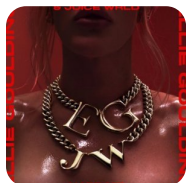


# Hate me – Ellie Goulding & Juice WRLD

Hate me, hate me, still tryna replace me  
Chase me, chase me, tell me how you hate me  
Erase me, 'rase me, wish you never dated me  
Lies, tell me lies, baby, tell me how you hate me  
I bet you don't kiss her with your eyes closed  
I bet you're still walking on a tightrope  
Miss me so much, you've been goin' psycho  
You ain't gotta say it, baby, I know  
It's a thin line between all this love and hate  
And if you switch sides,  
You're gon' have to claim your place  
So baby, this time you're gon' have to seal your fate  
Yeah baby, this time you're gon' have to seal your fate  
And tell me how you hate me,  
Hate me, still tryna replace me  
Chase me, chase me, tell me how you hate me  
Erase me, 'rase me, wish you never dated me  
Lies, tell me lies, baby, tell me how you hate me  
Hate me, hate me, still tryna replace me  
Chase me, chase me, tell me how you hate me  
Erase me, 'rase me, wish you never dated me  
Lies, tell me lies, baby, tell me how you hate me  
Hate me, hate me, tell me how you hate me  
Tell me how I'm trash and you could easily replace me  
Tell me that I'm strung out, wasted on the daily  
Prolly 'cause there's no one around me numbin' all my pain  
Prolly 'cause there's no umbrella  
To shield me from all the rain  
Probably because you're the one playin' the mind games  
You hate me because I don't let you play no mind games  
They give me migraines and damage my brain  
Date me, break me, easily replace me  
Hopefully you see it clear, hopefully it's HD  
Bet you wonder why the last few months I've been spacey  
In your head, I sing  
And tell me how you hate me,

Hate me, still tryna replace me  
Chase me, chase me, tell me how you hate me  
Erase me, 'rase me, wish you never dated me  
Lies, tell me lies, baby, tell me how you hate me  
Hate me, hate me, still tryna replace me  
Chase me, chase me, tell me how you hate me  
Erase me, 'rase me, wish you never dated me  
Lies, tell me lies, baby, tell me how you hate me  
It's a thin line between all this love and hate  
And if you switch sides,  
you're gon' have to claim your place  
So baby, this time you're gon' have to seal your fate  
Yeah baby, this time you're gon' have to seal your fate  
And tell me how you hate me, hate me,  
Still tryna replace me  
Chase me, chase me, tell me how you hate me  
Erase me, 'rase me, wish you never dated me  
Lies, tell me lies, baby, tell me how you hate me  
Tell me how you hate me, hate me, still tryna replace me  
Chase me, chase me, tell me how you hate me  
Erase me, 'rase me, wish you never dated me  
Lies, tell me lies, baby, tell me how you hate me  
Tell me how you hate me  
Lies, tell me lies, baby, tell me how you hate me



Słowa: brak danych  
Muzyka: brak danych