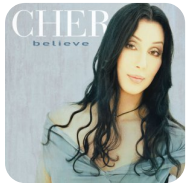


Believe – Cher

No matter how hard I try
You keep pushing me aside
And I can't break through
There's no talking to you
It's so sad that you're leaving
It takes time to believe it
But after all is said and done
You're gonna be the lonely one, oh
Do you believe in life after love
I can feel something inside me say
I really don't think
You're strong enough, no
Do you believe in life after love
I can feel something inside me say
I really don't think
You're strong enough, no
What am I supposed to do
Sit around and wait for you
Well I can't do that
There's no turning back
I need time to move on
I need love to feel strong
Cause I've got time to think it through
And maybe I'm too good for you, oh
Do you believe in life after love
I can feel something inside me say
I really don't think
You're strong enough, no
Do you believe in life after love
I can feel something inside me say
I really don't think
You're strong enough, no
Well I know that I'll get through this
'Cause I know that I am strong
I don't need you anymore
Oh, I don't need you anymore

Ooh, I don't need you anymore
No I don't need you anymore
Do you believe in life after love
I can feel something inside me say
I really don't think
You're strong enough, no
Do you believe in life after love
I can feel something inside me say
I really don't think
You're strong enough, no
Do you believe in life after love
I can feel something inside me say
I really don't think
You're strong enough, no
Do you believe in life after love
I can feel something inside me say
I really don't think
You're strong enough, no



Słowa: brak danych
Muzyka: brak danych