

Listen before i go – Billie Eilish

Take me to the rooftop
I wanna see the world when I stop breathing
Turnin' blue
Tell me love is endless, don't be so pretentious
Leave me like you do (Like you do)

If you need me, wanna see me
Better hurry 'cause I'm leavin' soon

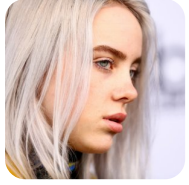
Sorry can't save me now
Sorry I don't know how
Sorry there's no way out (Sorry)
But down
Hmm, down

Taste me, the salty tears on my cheek
That's what a year-long headache does to you
I'm not okay, I feel so scattered
Don't say I'm all that matters
Leave me, déjà vu (Hmm)

If you need me, wanna see me
You better hurry, I'm leavin' soon

Sorry can't save me now (Sorry)
Sorry I don't know how (Sorry)
Sorry there's no way out (Sorry)
But down
Hmm, down

Call my friends and tell them that I love them
And I'll miss them
But I'm not sorry
Call my friends and tell them that I love them
And I'll miss them
Sorry



Słowa: brak danych
Muzyka: brak danych