

Anouk - Lost – Anouk

If roses are meant to be red
And violets to be blue

Then why isn't my heart meant for you

My hands longing to touch you
But I can barely breathe

Starry eyes that make me melt
Right in front of me

Lost in this world
I even get lost in this song

And when the lights go down
That is where I'll be found

This music's irresistible
Your voice makes my skin crawl

Innocent and pure
I guess you heard it all before

Mister Inaccessible
Will this ever change

One thing that remains the same
You're still a picture in a frame

Lost in this world
I even get lost in this song

And when the lights go down
That is where I'll be found

I get lost in this world

I get lost in your eyes

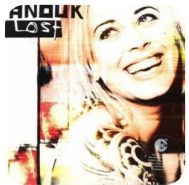
And when the lights go down
That's where I'll be found

Yeah yeah

Lost in this world
I get lost in your eyes

So when the lights go down
Am I the only one

Ooh



Słowa: brak danych
Muzyka: brak danych