

Remedy – Adele

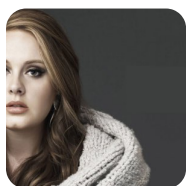
I remember
All of the things that I thought I wanted to be
So desperate
To find a way out of my world and finally breath
Right before my eyes I saw
My heart, it came to life
This ain't easy, it's not meant to be
Every story has it's scars

When pain cuts you deep
When the night keeps you from sleeping
Just look and you will see
That I will be your remedy
When the world seems so cruel
And your heart makes you feel like a fool
I promise you will see
That I will be, I will be your remedy
Ohhh, ohhh

No river
Is too wide or too deep for me to swim to you
Come whenever,
I'll be the shelter that won't let the rain come through
Your love - it is my truth
And I will always love you
Love you

When pain cuts you deep
When the night keeps you from sleeping
Just look and you will see
That I will be your remedy
When the world seems so cruel
And your heart makes you feel like a fool
I promise you will see
That I will be, I will be your remedy
Ohhh, ohhh

When the pain cuts you deep
When the night keeps you from sleeping
Just look and you will see
I will be, I will be
When the world seems so cruel
And your heart makes you feel like a fool
I promise you will see
That I will be, I will be, I will beeeeeee
Your remedy



Słowa: brak danych
Muzyka: brak danych