

Always On My Mind – Elvis Presley

Maybe I didn't treat you
Quite as good as I should have
Maybe I didn't love you
Quite as often as I could have
Little things I should have said
And done
I just never took the time

You were always on my mind
You were always on my mind

Maybe I didn't hold you
All those lonely, lonely times
And I guess I never told you
I'm so happy that you're mine
If I make you feel second best
Girl, I'm so sorry I was blind

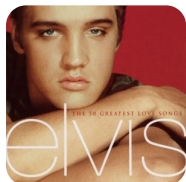
You were always on my mind
You were always on my mind

Tell me
Tell me that your sweet love hasn't died
Give me
Give me one more chance
To keep you satisfied, satisfied
Little things I should have said
And done
I just never took the time

You were always on my mind
You were always on my mind
You were always on my mind

Maybe I didn't treat you
Quite as good as I should have

Maybe I didn't love you
Quite as often as I could have
Maybe I didn't hold you
All those lonely, lonely times
And I guess I never told you



Słowa: CHRISTOPHER JOHN LEE JR, THOMPSON WAYNE CARSON, ZAMBON FRANCIS
RODNEY

Muzyka: CHRISTOPHER JOHN LEE JR, THOMPSON WAYNE CARSON, ZAMBON
FRANCIS RODNEY

Rok wydania: 1973

Płyta: Elvis