

# Remedy – Adele

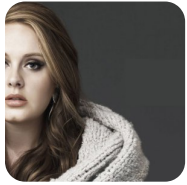
I remember  
All of the things that I thought I wanted to be  
So desperate  
To find a way out of my world and finally breath  
Right before my eyes I saw  
My heart, it came to life  
This ain't easy, it's not meant to be  
Every story has it's scars

When pain cuts you deep  
When the night keeps you from sleeping  
Just look and you will see  
That I will be your remedy  
When the world seems so cruel  
And your heart makes you feel like a fool  
I promise you will see  
That I will be, I will be your remedy  
Ohhh, ohhh

No river  
Is too wide or too deep for me to swim to you  
Come whenever,  
I'll be the shelter that won't let the rain come through  
Your love - it is my truth  
And I will always love you  
Love you

When pain cuts you deep  
When the night keeps you from sleeping  
Just look and you will see  
That I will be your remedy  
When the world seems so cruel  
And your heart makes you feel like a fool  
I promise you will see  
That I will be, I will be your remedy  
Ohhh, ohhh

When the pain cuts you deep  
When the night keeps you from sleeping  
Just look and you will see  
I will be, I will be  
When the world seems so cruel  
And your heart makes you feel like a fool  
I promise you will see  
That I will be, I will be, I will beeeeeee  
Your remedy



Słowa: brak danych  
Muzyka: brak danych